

Media

Media name	Size	Part number
EPSON 360 dpi Ink Jet Paper	Letter A4	S041060 S041059
EPSON High Quality Ink Jet Paper	Letter A4	S041111 S041117
EPSON Photo Quality Ink Jet Paper	Letter A4 Legal	S041062 S041161 S041067
EPSON Photo Quality Glossy Paper	Letter A4	S041124 S041126
EPSON Photo Quality Glossy Film	Letter A4 A6	S041072 S041071 S041107
EPSON Photo Paper	Letter A4 4 x 6 inches Panoramic	S041141 S041140 S041134 S041145
EPSON Ink Jet Transparencies	Letter	S041064
EPSON Photo Quality Ink Jet Cards	A6	S041054
EPSON Photo Quality Ink Jet Note Cards	A6 (4.1 x 5.8 inches)	S041147
EPSON Glossy Photo Greeting Cards	4.75 x 7 inches (folded)	S041267
EPSON Photo Stickers Kit (CD-ROM and paper)	A6, 16 frames per sheet	S041144-KIT
EPSON Photo Stickers (refill, paper only)	A6, 16 frames per sheet	S041144
EPSON Iron-On Cool Peel Transfer Paper	Letter	S041153/ S041155
EPSON Photo Quality Self Adhesive Sheets	A4	S041106
EPSON Matte Paper - Heavyweight	Letter	S041257

Accessories

Ink Cartridges

Cartridge	Part number
Black	T013201 (U.S.) or T013311 (Canada and Latin America)
Color	T014201 (U.S.) or T014311 (Canada and Latin America)



The Media Type setting for your paper may not be the same name as your paper.

The availability of paper types varies by location.

Printer Specifications

Printing

Printing method On-demand ink jet

Nozzle configuration

Black 48 nozzles
 Color 45 nozzles
 (15 each: cyan, magenta, yellow)

Resolution Maximum 1440 dpi x 720 dpi

Print direction Bidirectional with logic seeking

Control code ESC/P® Raster, EPSON Remote

Input buffer 16KB

Paper

Paper type	Size	Paper types	Thickness	Weight
Single sheets	Letter (8.5 × 11 inches) Legal (8.5 × 14 inches) Half letter (statement, 5.5 × 8.5 inches) Executive (7.5 × 10 inches) A4 (210 × 297 mm) A5 (148 × 210 mm)	Plain bond paper and special ink jet papers distributed by EPSON	0.003 to 0.004 inch (0.08 to 0.11 mm) for plain bond paper	17 to 24 lb (64 to 90 g/m ²) for plain bond paper
Transparencies, glossy film, glossy paper	Letter (8.5 × 11 inches) A4 (210 × 297 mm) A6 (105 × 148 mm), glossy film only	Transparencies, glossy paper, and glossy film distributed by EPSON	—	—
Matte Paper - Heavyweight	Letter (8.5 × 11 inches)	Matte paper distributed by EPSON	—	—
Self-adhesive sheets	A4 (210 × 297 mm)	Self adhesive sheets distributed by EPSON	—	—
Envelopes	No. 10, 4.1 × 9.5 inches (104 × 241 mm) DL, 4.3 × 8.7 inches (110 × 220 mm) C6, 4.4 × 6.4 inches (114 × 162 mm) 132 × 220 mm (5.2 × 8.7 inches)	Plain bond paper or air mail paper	0.006 to 0.02 inch (0.16 to 0.52 mm)	12 to 20 lb (45 to 75 g/m ²)
Ink jet cards	A6 (105 × 148 mm) Letter (8.5 × 11 inches)	Ink jet cards distributed by EPSON	—	—
Photo Paper	Letter (8.5 × 11 inches) A4 (210 × 297 mm) 4 × 6 inches (102 × 152 mm) Panoramic (210 × 594 mm)	Photo paper distributed by EPSON	—	—
Photo Stickers	A6 (105 × 148 mm), 16 frames/sheet	Photo stickers distributed by EPSON	—	—
Iron-On Cool Peel Transfer Paper	Letter (8.5 × 11 inches)	Transfer paper distributed by EPSON	—	—



Always load paper into the sheet feeder short edge first, except for envelopes. Load envelopes flap edge first with the flap side down

Since the quality of any particular brand or type of paper may be changed by the manufacturer at any time, EPSON cannot attest to the quality of any non-EPSON brand or type of paper. Always test samples of paper stock before purchasing large quantities or printing large jobs.

Poor quality paper may reduce print quality and cause paper jams and other problems. If you encounter problems, switch to a higher grade of paper.

Do not load curled or folded paper.

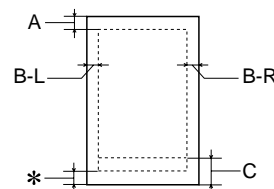
Use papers under these conditions:

Temperature: 59 to 77 °F (15 to 25 °C)
Humidity: 40 to 60% RH

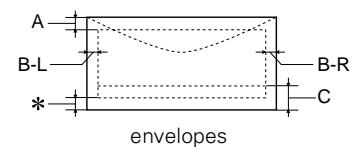
Store printouts on EPSON Photo Quality Glossy Film and Self Adhesive Sheets under these conditions:

Temperature: 59 to 86 °F (15 to 30 °C)
Humidity: 20 to 60% RH

Printable area

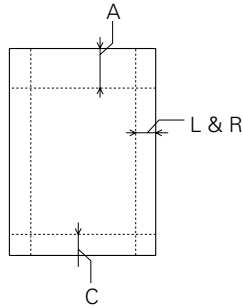


single sheets/index cards



envelopes

- A: The minimum top margin is 0.12 inch (3.0 mm).
When loading multiple sheets of EPSON Photo Quality Glossy Film, the minimum top margin is 1.2 inches (30 mm).
- B-L: The minimum left margin is 0.12 inch (3.0 mm).
- B-R: The minimum right margin is 0.12 inch (3.0 mm).
- C: The minimum bottom margin is 0.55 inch (14.0 mm).
- * You can extend the minimum bottom margin to 0.12 inch (3.0 mm) by selecting Maximum as the Printable Area setting. However, print quality may decline in the expanded area. Before printing large jobs, print a single sheet to confirm print quality.



EPSON 4 × 6-inch Photo Paper *
(dotted lines indicate perforations)

- A: The maximum top margin is 0.67 inch (17.0 mm).
- L & R: The maximum left and right margin is 0.24 inch (6.1 mm).
The minimum left and right margin is 0.12 inch (3.0 mm).
- C: The maximum bottom margin is 0.24 inch (6.1 mm).

* EPSON 4 × 6-inch Photo Paper is 4.5 × 6.9 inches (114.3 × 175.3 mm), including the perforated margins. The printable area is 4 × 6 inches (101.6 × 152.4 mm).

Ink Cartridges

Specification	Black ink cartridge (T013201 (U.S.) or T013311 (Canada and Latin America))	Color ink cartridge (T014201 (U.S.) or T014311 (Canada and Latin America))
Color(s)	Black	Cyan, Magenta, Yellow
Print capacity*	270 pages comparable with 3.5% ECMA (ISO 10561) at 360 dpi 190 pages, 5% in calculation	150 pages, 5% each CMY (total 15%) in calculation
Cartridge life	2 yr. from production date (if unopened) (within 6 mo. after opening package, at 77 °F [25 °C])	
Storage temperature	-4 to 104 °F (-20 to 40 °C) 1 month at 104 °F (40 °C)	
Transit temperature	-22 to 140 °F (-30 to 60 °C) 1 month at 104 °F (40 °C) 120 hours at 140 °F (60 °C)	
Freezing temperature**	-0.4 to -5.8 °F (-18 to -21 °C)	
Dimensions	0.8 × 2.1 × 1.5 inches (W × D × H) 19.8 × 52.7 × 38.5 mm (W × D × H)	1.7 × 2.1 × 1.5 inches (W × D × H) 42.9 × 52.7 × 38.5 mm (W × D × H)

* The figure given is based on continuous printing after ink replacement. The actual print capacity may vary, depending on how often you turn on the printer and how often you clean the print head.

** Ink thaws and is usable after approximately 3 hours at 77 °F (25 °C).



To ensure good results, use genuine EPSON cartridges and do not refill them. Other products may cause damage to your printer not covered by EPSON's warranties.

Don't use an ink cartridge if the date on the package has expired.

Mechanical

- Paper feed method: Friction
- Paper path: Sheet feeder, rear entry
- Sheet feeder capacity: 100 sheets of 17 lb (65 g/m²) paper
- Dimensions
 - Storage
 - Width: 17 inches (431 mm)
 - Depth: 8.3 inches (210 mm)
 - Height: 6.3 inches (160 mm)
 - Printing
 - Width: 17 inches (431 mm)
 - Depth: 18.7 inches (476 mm)
 - Height: 10.7 inches (271 mm)
- Weight: 7.1 lb (3.2 kg) without the ink cartridges

Electrical

Specification	120 V Model	220–240 V Model
Input voltage range*	99 to 132 V	198 to 264 V
Rated frequency range	50 to 60 Hz	
Input frequency range	49.5 to 60.5 Hz	50 to 60.5 Hz
Rated current	0.4 A	0.2 A
Power consumption	Approx. 20 W (ISO/IEC 10561 Letter Pattern) Approx. 4.5 W in standby mode	

* Check the label on the back of the printer for your printer's voltage.

Environmental

- Temperature
 - Operation: 50 to 95 °F (10 to 35 °C)
 - Storage*: -4 to 104 °F (-20 to 40 °C)
1 month at 104 °F (40 °C)
 - Transit*: -4 to 140 °F (-20 to 60 °C)
120 hours at 140 °F (60 °C)

Humidity (without condensation)

- Operation: 20 to 80% RH
- Storage*: 5 to 85% RH



*Stored in shipping container

Safety Approvals

- Safety standards: UL 1950, CSA C22.2 No. 950
- EMC: FCC part 15 subpart B class B

Setting Up the Printer the First Time

Connect the Printer and Computer

1. Make sure the printer is unplugged and your computer is turned off.
2. Connect the  square end of the USB cable to your printer's USB port.
3. Connect the  flat end of the cable to your computer's USB port or a first tier USB hub port.



If you're using a USB hub, connect the printer to the first tier of the hub. If the printer doesn't work there, connect it directly to a USB port on your computer.

Turn On Your Computer

Turn on your computer first and wait until you see your desktop icons. (With Windows 2000, log on as necessary.)

Plug In the Printer

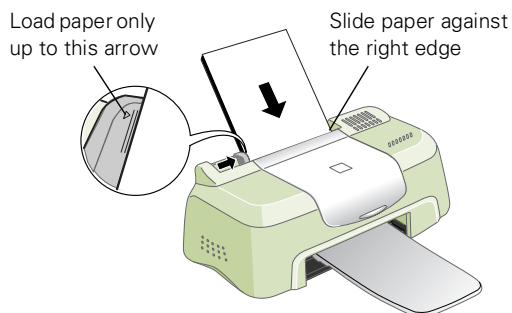
Plug the printer's power cord into a grounded electrical outlet. The printer is now powered on. It moves its print head and makes some noise.



Don't use an outlet controlled by a wall switch or timer, or one on the same circuit as a large appliance, to avoid damaging the printer's power supply.

Load Paper

Set paper carefully in the slot in the top of the printer; don't push it deeper into the slot. Slide the left edge guide against the paper.



Install the Software and Ink Cartridges

Before handling your ink cartridges, be sure to read and follow these ink cartridge precautions:



Install both ink cartridges, and leave them installed for all types of printing, or the printer won't work.

Remove the yellow tape seal from the top of the ink cartridges or you'll permanently damage them. Don't remove the clear seals on the bottom or ink will leak out.

The ink cartridges packed with your printer are for initial installation only.

Don't move the ink cartridge holders by hand or you'll damage the printer.


Don't open an ink cartridge clamp to remove a cartridge except to replace it with a new one. Once you remove a cartridge, you can't reuse it, even if it contains ink.



Keep ink cartridges out of the reach of children and do not drink the ink. If ink gets on your skin, wash the area thoroughly with soap and water. If ink gets in your eyes, flush them immediately with water.



If you exit the Setup Utility before set up is complete, you'll need to install your ink cartridges through EPSON Status Monitor 3 (Windows) or StatusMonitor (Macintosh).

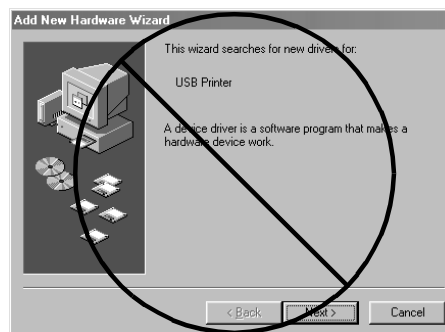
Windows: Double-click the  **Status Monitor 3** icon on your Windows task bar. Click the How to button and follow the on-screen instructions.

Macintosh: For instructions, see "Replacing a Low or Empty Ink Cartridge" on page 7.

Locate the CD-ROM that came with your printer and carefully follow the instructions here for your operating system.

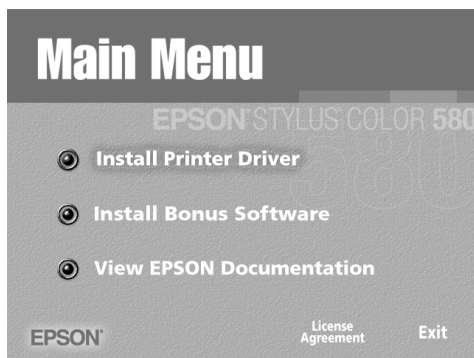
Windows

1. When you see this screen, click **Cancel**. You can't install your printer software that way. (This screen may appear later in the installation process.)



If you don't see a screen like this, unplug the USB connector from your computer and reconnect it.

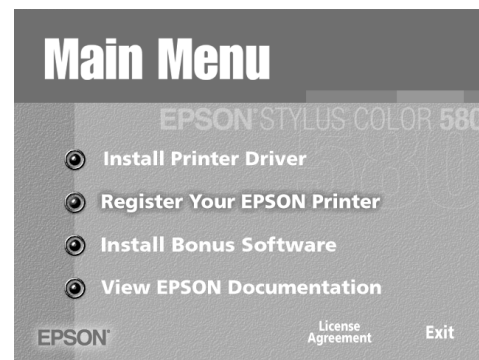
2. Insert your printer software CD-ROM in a CD-ROM or DVD drive.
3. Double-click the **My Computer** icon on your screen.
4. Double-click the **EPSON** CD-ROM or DVD icon.
5. Double-click the **EPSON** icon to start the installer. (Don't select any other icon in the folder.)
6. Select **English**.
7. Read the license agreement and click **Agree**. You see the Main Menu.



8. Click **Install Printer Driver**. You see the printer driver installation screen.
9. Make sure your model is highlighted, then click **OK**. The installer copies files to your computer and displays a series of windows on your screen.
10. After a few moments, you see the Setup Utility that walks you through installing the ink cartridges. Click **Next** at the first screen, then follow the on-screen instructions to install the ink cartridges.
11. When setup is complete, click **OK**.
12. You see the EPSON Product Registration screen. Make sure **English** is selected, then follow the on-screen instructions to register your printer. At the last screen, click **Done**.
13. At the Main Menu, click **Exit** and restart your computer. Leave your CD-ROM in the drive.

Macintosh

1. Insert your printer software CD-ROM in a CD-ROM or DVD drive.
2. Double-click the **EPSON English** icon in the CD-ROM or DVD folder. (If your folder doesn't open automatically, double-click the EPSON CD-ROM or DVD icon on your desktop.)
3. Read the license agreement, and click **Agree**.
4. Click **Continue**. You see the Installer screen.
5. Click **Install**, then follow the on-screen instructions to install your printer driver, select a default paper size, and restart your computer. Leave in your CD-ROM.
6. Open the Chooser from the Apple menu.
7. Click the **SC 580** icon, then click your USB port icon. Turn on background printing, if you want.
8. Close the Chooser.
9. Double-click the **EPSON English** icon in the CD-ROM folder. (If your CD-ROM folder didn't open automatically, double-click the EPSON CD-ROM icon on your desktop.)
10. After a few moments, you see the Setup Utility that walks you through installing the ink cartridges. Click **Next** at the first screen, then follow the on-screen instructions to install the ink cartridges.
11. When setup is complete, click **OK**. You see the Main Menu.



12. Click **Register Your EPSON Printer**. You see the EPSON Product Registration screen. Follow the on-screen instructions to register your printer. At the last screen, click **Quit**. Leave your CD-ROM in the drive.

Printing on Special Media

Whether you print on plain paper or special media, you need to select the Media Type setting according to the guidelines in the table below.

For this paper name...	Select this Media Type setting
Plain paper and envelopes EPSON Glossy Photo Greeting Cards (inside surface)	Plain paper
EPSON 360 dpi Ink Jet Paper EPSON Iron-On Cool Peel Transfer Paper	360 dpi Ink Jet Paper
EPSON High Quality Ink Jet Paper EPSON Photo Quality Ink Jet Paper EPSON Photo Quality Ink Jet Cards EPSON Photo Quality Ink Jet Note Cards EPSON Photo Quality Self Adhesive Sheets	Photo Quality Ink Jet Paper
EPSON Photo Quality Glossy Paper EPSON Photo Paper EPSON Glossy Photo Greeting Cards (outside surface)	Photo Paper
EPSON Photo Quality Glossy Film EPSON Photo Stickers	Photo Quality Glossy Film
EPSON Ink Jet Transparencies	Ink Jet Transparencies
Matte Paper - Heavyweight	Matte Paper - Heavyweight

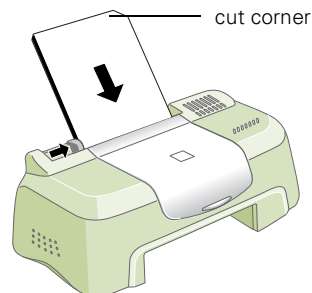
Additional Media Loading Guidelines



Don't use the cleaning sheets that may be included with your special media; they may damage the printer.

- Always handle sheets by the edges, and don't touch the printable surface.
- Be sure to load the printable (whiter) side of the media face up in the sheet feeder.
- You can load paper up to the arrow mark on the left edge guide.
- In addition to the **Media Type** setting, remember to select the correct **Paper Size** for your media in the printer software.
- If the special media has protective sheets between each sheet of media, be sure to remove the protective sheets before printing.
- If any paper you buy comes with a cleaning sheet, don't use the cleaning sheet with this printer; it may jam inside the printer.

- Some special media have a cut corner that you need to position correctly, as shown below.



- You can load the following number of sheets of EPSON special media:

For this paper name...	Load this number of sheets
EPSON 360 dpi Ink Jet Paper EPSON High Quality Ink Jet Paper EPSON Photo Quality Ink Jet Paper	Up to 30 sheets
EPSON Photo Quality Ink Jet Cards EPSON Photo Quality Ink Jet Note Cards EPSON Glossy Photo Greeting Cards	Up to 30 cards with the included support sheet beneath the stack
EPSON Photo Quality Glossy Paper EPSON Photo Paper Matte Paper - Heavyweight EPSON Photo Quality Self Adhesive Sheets EPSON Iron-On Cool Peel Transfer Paper EPSON Photo Stickers	One sheet at a time
EPSON Photo Quality Glossy Film EPSON Ink Jet Transparencies	One sheet at a time with the included support sheet or a piece of plain paper beneath the special paper

Replacing an Ink Cartridge

When your ink levels are low, Status Monitor 3 (Windows) or StatusMonitor (Macintosh) displays a message on your screen. When you see the message, it's a good time to make sure you have a new cartridge or replace it right away.

When an ink cartridge is empty, Status Monitor 3 (Windows) or StatusMonitor (Macintosh) displays another message and you must replace the cartridge to resume printing.

You may also need to replace an ink cartridge if it's more than six months old and your printouts don't look as good as they used to. If print quality doesn't improve after cleaning and aligning the print head, you can replace one or both cartridges.



You cannot print if either ink cartridge is empty or not installed. Leave the empty cartridge installed in the printer until you have obtained a replacement. Otherwise the ink remaining in the print head nozzles may dry out.

Use these EPSON ink cartridges within six months of installing them and before the expiration date on the package:

- ❑ Black ink cartridge: T013201 (U.S.)
T013311 (Canada and Latin America)
- ❑ Color ink cartridge: T014201 (U.S.)
T014311 (Canada and Latin America)



To ensure good results, use genuine EPSON ink cartridges and do not refill them. Other products may cause damage to your printer not covered by EPSON's warranty.

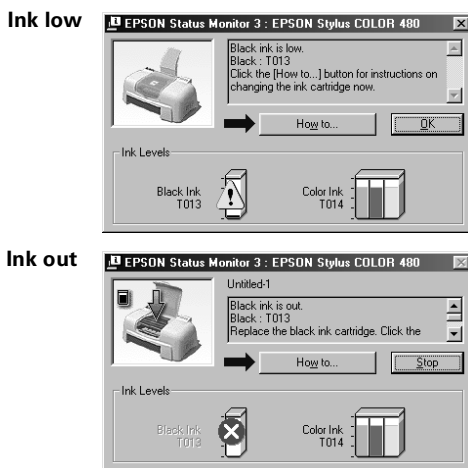
When you need new ink cartridges, contact your dealer or call EPSON at (800) 873-7766. You can also visit the EPSON Store™ at www.epson.com (U.S. sales only). In Canada, please call (800) 873-7766 for dealer referral.

Before you replace a cartridge, be sure to read the precautions on page 4.

To replace a cartridge when you see a Status Monitor 3 (Windows) or StatusMonitor (Macintosh) message, or see “Replacing a Low or Empty Ink Cartridge” on page 7.

Replacing a Low or Empty Ink Cartridge

When Status Monitor 3 (Windows) or StatusMonitor (Macintosh) indicates that ink levels are low or you're out of ink, you see one of these windows (The screens here are for Windows. The screens for Macintosh vary slightly but the instructions are the same.):



Before you begin, make sure you have a new ink cartridge and have read the ink cartridge precautions. Once you start the ink cartridge replacement procedure, you must complete all the steps in one session.

1. Click the **How to** button.
2. Follow the instructions on the screen to replace the ink cartridge.
3. After you've installed the cartridge, the printer begins charging ink for a few minutes. Wait until you see a message telling you that charging is complete before resuming printing.



Never unplug the printer while it's charging ink.

Replacing an Outdated Ink Cartridge


If you need to replace an ink cartridge before you see a Status Monitor 3 (Windows) or StatusMonitor (Macintosh) message, follow the steps here to use the Ink Cartridge Replacement utility. Before you begin, make sure you've read the ink cartridge precautions on page 4.



For Windows, you can only access the Ink Cartridge Replacement utility from the Windows Printers utility, as described in the steps below. You can't run the utility from within a Windows application.

1. Make sure the printer is plugged in but not printing.
2. **Windows:** Click **Start**, point to **Settings**, then select **Printers**.

Right-click the **EPSON Stylus COLOR 580** icon and click **Properties** from the menu that appears.

Macintosh: Access the printer settings dialog box as described on page 11.
3. Click the **Utility** tab (Windows) or the  **Utility** button (Macintosh), then click the **Ink Cartridge Replacement** button.
4. Follow the instructions on the screen to replace the ink cartridge.
5. After you've installed the cartridge, the printer begins charging ink for several minutes. Wait until you see a message telling you that charging is complete before resuming printing.



Never unplug the printer while it's charging ink.

Cleaning the Print Head

If your printed image is unexpectedly light or faint, or dots or lines are missing from the image, you may need to clean the print head. This unclogs the nozzles so they can deliver ink properly.

You can check to see if any nozzles are clogged by running the Nozzle Check utility. Then, if you need to clean the print heads, you can do so from the utility. See the next section for instructions.

If you don't want to check the nozzles first, you can run the Head Cleaning utility to clean the print head, as described on page 8.

Cleaning the print head uses ink, so clean it only if print quality declines.




When you don't turn on your printer for a long time, the print quality can decline. It's a good idea to plug in your printer at least once a month to maintain good print quality.


If any paper you buy comes with a cleaning sheet, don't use the cleaning sheet with your printer; it may jam inside the printer.

Printing a Nozzle Check


Follow these steps for your operating system to run the Nozzle Check utility:

1. Make sure the printer is plugged in but not printing.
2. **Windows:** Right-click the  Status Monitor 3 icon on your Windows taskbar, then select **Nozzle Check** in the menu that appears.



To right-click, place your cursor on the  Status Monitor 3 icon and click the right mouse button.

Or, if you have an application running, you can also run the utility by accessing the printer settings dialog box as described in your *Printer Basics* book. Click the **Utility** tab, then click the **Nozzle Check** button.

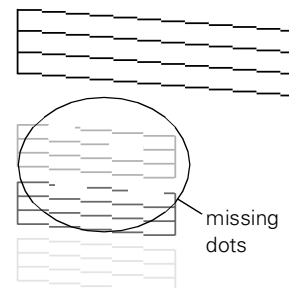
Macintosh: Access the printer settings dialog box as described in your *Printer Basics* book. Click the  Utility button, then click the **Nozzle Check** button.

3. Make sure letter-size or larger paper is loaded in the printer. Click **Print** (Windows) or **Next** (Macintosh) to print a nozzle check pattern.

4. Examine the nozzle check pattern you print.

Each staggered horizontal and straight vertical line should be complete, with no gaps in the dot pattern. If your printout looks okay, click **Finish**.


If any dots are missing, as shown here, click **Clean** and follow the instructions on the screen to clean the print head again. (The actual test prints the lower pattern in color.)




If you don't see any improvement after cleaning three or four times, check the solutions in "Problems Getting Good Print Quality" on page 35. You can also turn the printer off and wait overnight—this allows any dried ink to soften—and then try cleaning the print head again.

Using the Head Cleaning Utility


Follow these steps for your operating system to run the Head Cleaning utility:

1. Make sure the printer is plugged in but not printing.
2. **Windows:** Right-click the  Status Monitor 3 icon on your Windows taskbar, then select **Head Cleaning** in the menu that appears.



To right-click, place your cursor on the  Status Monitor 3 icon and click the right mouse button.

Or, if you have an application running, you can also run the utility by accessing the printer settings dialog box as described in your *Printer Basics* book. Click the **Utility** tab, then click the **Head Cleaning** button.

Macintosh: Access the printer settings dialog box as described in your *Printer Basics* book. Click the  Utility button, then click the **Head Cleaning** button.

3. Click **Start** (Windows) or **Next** (Macintosh) to start cleaning. Cleaning takes about 30 seconds, during which the print head moves and the printer makes some noise.



Never unplug the printer while it's cleaning the print head.

4. When cleaning is finished, run a nozzle check to confirm the print head nozzles are clean. Click **Print Nozzle Check Pattern**.

5. Make sure letter-size or larger paper is loaded in the printer and click **Print Nozzle Check Pattern** (Windows) or **Confirmation** (Macintosh). Then follow the instructions on the screen.
6. See page 8 for details on examining the nozzle check pattern. If the nozzle check pattern isn't missing any dots, click **Finish**.

If any dots are missing, click **Clean** and follow the instructions on the screen to clean the print head again.

If you don't see any improvement after cleaning three or four times, check the solutions in your *Printer Basics* book. You can also turn the printer off and wait overnight—this allows any dried ink to soften—and then try cleaning the print head again.

Aligning the Print Head

If your printouts contain jagged characters or misaligned vertical lines, you may need to align the print head. Your printer must be connected directly to your computer, not connected over a network, to use the Print Head Alignment utility. Follow these steps for your operating system:

1. Make sure the printer is plugged in but not printing, and letter-size or larger paper is loaded.



For the best results, load EPSON ink jet paper in the printer whenever you check the print head alignment. Don't use plain, recycled, or photocopier paper.

2. **Windows:** Right-click the Status Monitor 3 icon on your Windows taskbar, then select **Print Head Alignment** in the menu that appears.

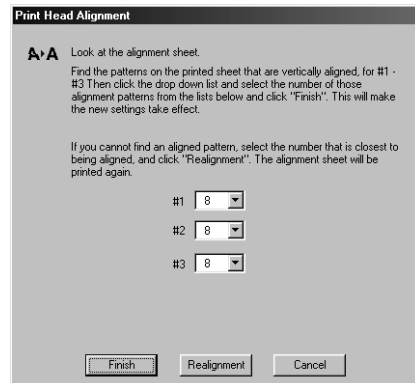


To right-click, place your cursor on the Status Monitor 3 icon and click the right mouse button.

Or, if you have an application running, you can also run the utility by accessing the printer settings dialog box as described in your *Printer Basics* book. Click the **Utility** tab, then click the **Print Head Alignment** button.

Macintosh: Access the printer settings dialog box as described in your *Printer Basics* book. Click the **Utility** button, then click the **Print Head Alignment** button.

3. Click **Next** to print an alignment page. You see this window:



4. On the printed page, select the pattern that shows the two vertical lines most precisely printed on top of each other. Select one pattern each for rows 1, 2, and 3. Then enter the number of the best pattern for each row in the corresponding boxes on the screen and click **Finish**.

If there isn't a precisely aligned pattern, enter the numbers of the best aligned patterns in each row and click **Realignment**. Another alignment page prints with your selections printed as patterns numbered 8. Repeat step 4 to select a more precise pattern for each row.

Cleaning the Printer

To keep your printer working at its best, you should clean it several times a year. Follow these steps:

1. Unplug the printer's power cord and disconnect the printer cable.
2. Remove all the paper from the sheet feeder.
3. Clean the exterior of the printer with a soft, damp cloth.
4. Clean ink out of the printer's interior with a soft, damp cloth.



Don't touch the gears inside the printer.

Never use a hard or abrasive brush, or alcohol or thinner for cleaning; they can damage the printer components and case.

Don't get water on the printer components and don't spray lubricants or oils inside the printer.

Don't use any cleaning sheets included with special media; they may jam inside the printer.

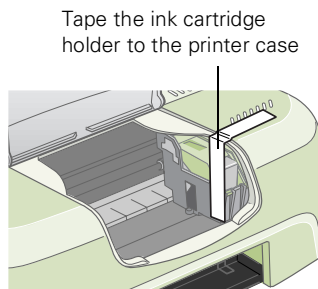
Transporting the Printer

If you move your printer some distance, you need to prepare it for transportation in its original box or one of a similar size. Follow these steps:



To avoid damage, always leave the ink cartridges installed when transporting the printer. Be sure to remove the tape used in step 4 after installing the printer in its new location.

1. Plug in the printer, wait until the print head locks in the far right position, then unplug the printer.
2. Disconnect the printer cable from the printer.
3. Remove any paper from the printer and remove the paper support.
4. Open the printer cover. Secure the ink cartridge holder to the printer with tape as shown, then close the printer cover.
5. Repack the printer and attachments in the original box using the protective materials that came with it.



Be sure to keep the printer level as you transport it. After transporting the printer, remove the tape securing the print head and then print a document to test the output.

Related Documentation

SM-SC480\580	EPSON Stylus Color 480SX\580 Service Manual
PL-SC580	EPSON Stylus Color 580 Parts Price List
CPD-10843	EPSON Stylus Color 580 <i>Printer Basics</i>
CPD-10844	EPSON Stylus Color 580 <i>Start Here</i> (English)
CPD-10845	EPSON Stylus Color 580 <i>Avant tout</i> (French)
CPD-10846	EPSON Stylus Color 580 CD-ROM